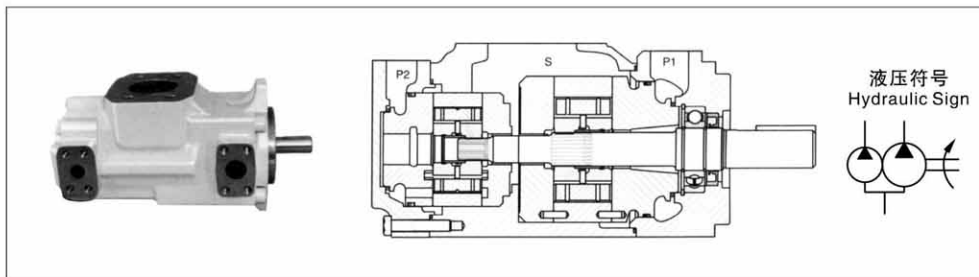


## □ T6系列双联泵 T6 Series-Double pumps



## ◇ 型号说明 Model Designation

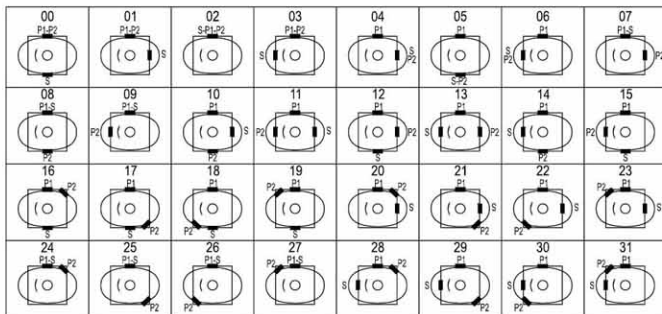
(F3-)	T6CC	-25	-17	-1	R	02	-C	10
前注 Note	系列号 Series	轴端泵排量代号 Flow-shaft end Pump	盖端泵排量代号 Flow-cover end pump	轴伸形式 Shaft type	旋转方向 Rotation	油口位置 port positions	设计号 Design number	油口尺寸 port dimensions
无标记No- marking: 石油系油 Petroleum series oil 乳化液 emulsification fluid 水-乙二醇water glycol-fluid F3: 磷酸酯液 phosphate ester fluid	T6CC	03、05、06、08、 10、12、14、17、 20、22、25、28、31	03、05、06、08、 10、12、14、17、 20、22、25、28、31	见安装连接 尺寸 See installation dimensions	(从泵的轴端看) (Views form shaft end of pump) R-顺时针旋转 right hand for clockwise L-逆时针旋转 left hand for counter- clockwise	见下图 see picture below	C	00、01、10、11、 见安装连接尺寸 See installation dimensions
	T6DC	14、17、20、24、 28、31、35、38、 42、45、50	03、05、06、08、 10、12、14、17、 20、22、25、28、31		无此选项 no options			
	T6EC	42、45、50、52、 57、62、66、72、85	03、05、06、08、 10、12、14、17、 20、22、25、28、31					
	T6ED	42、45、50、52、 57、62、66、72、85	14、17、20、24、 28、31、35、38、 42、45、50					

与相同规格的单泵性能参数一致，详见T6单泵的性能参数。

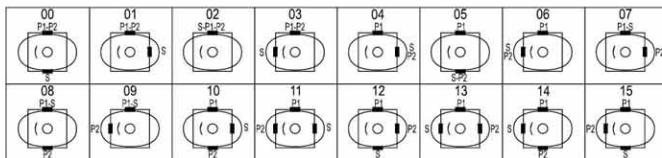
Specification is as the same as similar single pump, please refer to Page T6 single pump specification.

## ◇ 油口位置(从泵的轴端看) Port positions(Views from shaft end of pump)

T6CC、T6DC、T6EC

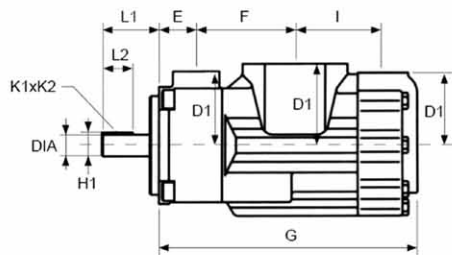
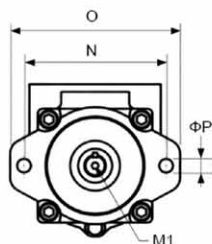
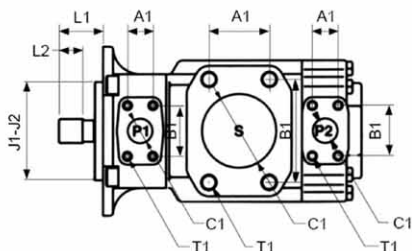


T6ED



## ◇ 安装连接尺寸 Installation Dimensions

T6CC  
T6DC  
T6EC  
T6ED

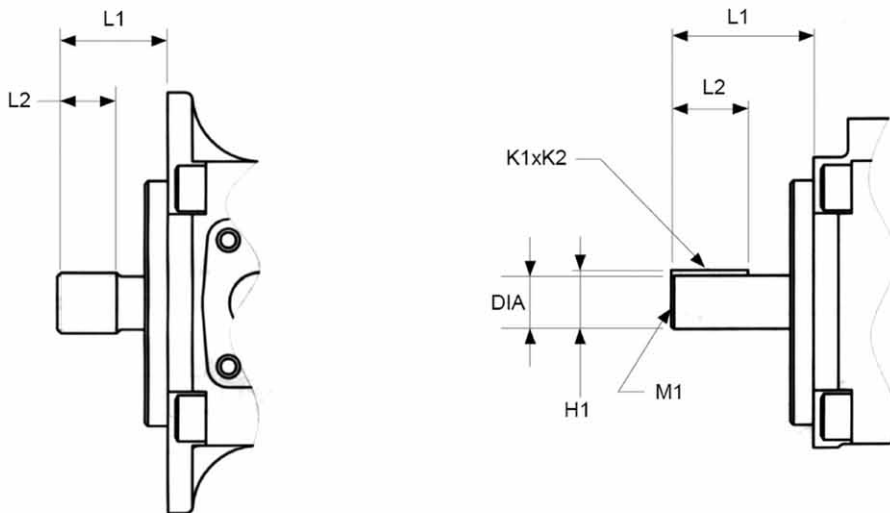


T6CC	
E	38.1
F	101.6
G	265.6
I	88.2
J1	101.60
J2	101.55
N	146.0
O	174.5
ØP	14.3
T6DC	
E	38.1
F	114.3
G	286.0
I	109.5
J1	127.00
J2	126.95
N	181.0
O	212.4
ØP	17.5
T6EC	
E	52.3
F	118.5
G	331.6
I	136.7
J1	127.00
J2	126.95
N	181.0
O	213.0
ØP	17.5
T6ED	
E	52.3
F	133.5
G	361.0
I	148.2
J1	127.00
J2	126.95
N	181.0
O	213.0
ØP	17.5

油口/oil port	法兰 Flange	尺寸/Dimensions(mm)					重量 /Kg weight		
		A1	B1	ØC1	D1	T1 口螺纹 Thread UNC			
T6CC	P1	1"	F08	26.2	52.4	25.4	76.2	3/8"-16UNC x 19.0	26
	P2	01-11: 3/4"	F06	22.2	47.7	19.0	76.2	3/8"-16UNC x 19.0	
		00-10: 1"	F08	26.2	52.4	25.4	74.7	3/8"-16UNC x 19.0	
	S	10-11: 2 1/2"	F20	50.8	88.9	63.5	84.1	1/2"-13UNC x 23.9 5/8"-11UNC x 28.4	
T6DC	P1	1 1/4"	F10	30.2	58.7	31.8	82.6	7/16"-14UNC x 22.3	36.6
	P2	1"	F08	26.2	52.4	25.0	74.7	3/8"-16UNC x 19.0	
	S	3"	F24	62.0	106.4	76.0	88.9	5/8"-11UNC x 28.4	
T6EC	P1	1 1/2"	F12	35.7	69.8	37.1	98.4	1/2"-13UNC x 23.4	55
	P2	1"	F08	26.2	52.4	25.0	74.7	3/8"-16UNC x 19.0	
	S	3 1/2"	F28	69.9	120.6	88.9	102.4	5/8"-11UNC x 23.4	
T6ED	P1	1 1/2"	F12	35.7	69.8	37.1	98.4	1/2"-13UNC x 23.5	66
	P2	1 1/4"	F10	30.2	58.7	29.5	101.6	7/16"-14UNC x 24.0	
	S	4"	F32	77.8	130.2	101.6	102.4	5/8"-11UNC x 30.0	

## ◇ 安装连接尺寸 Installation Dimensions

## T6CC、T6DC、T6EC、T6ED



轴伸 Shaft extension		最大扭矩/Max torque(N.m)			安装尺寸/Install Dimensions(mm)					
		T6CC	T6DC	T6EC T6ED	L1	L2	直径/Diameter	K1xK2	H1	M1
1	平键: 非 SAE (Φ22)	238			58.2	31.7	22.225-22.200	4.76x4.71	24.53	-
	平键: SAE C(Φ31)		721		83.6	49.3	31.750-31.700	7.94x7.89	35.27	M10x20.0
	平键: SAE CC(Φ38)			●	90.9	50.8	38.100-38.050	9.52x9.47	42.36	M10x20.0
2	平键: 非 SAE (Φ31)		577		73.2	38.1	31.750-31.700	7.94x7.89	35.27	-
	平键: 非 SAE (Φ31)			577	61.9	38.1	31.750-31.700	7.94x7.89	35.27	-
3	花键: SAE BB	545			45.5	24.5	SAE J498b 1 级, 径节 16/32, 15 牙			-
	花键: SAE C		●	●	55.7	38.0	SAE J498b 1 级, 径节 12/24, 14 牙			-
4	花键: 非 SAE		●		77.7	48.0	SAE J498b 1 级, 径节 12/24, 14 牙			-
	花键: SAE CC			●	62.2	31.5	SAE J498b 1 级, 径节 12/24, 17 牙			-
5	花键: SAE B	343			40.7	24.5	SAE J498b 1 级, 径节 16/32, 13 牙			-

● 能在最大流量, 最高压力下工作。 ● work at maximum flow and pressure.

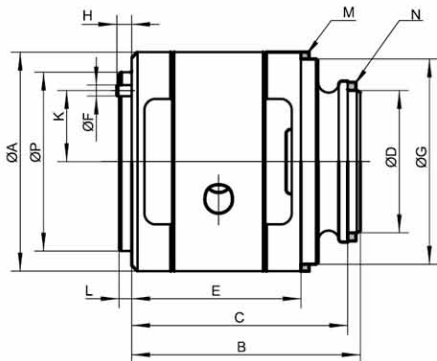
## □ T6系列泵芯 T6 Series-cartridge

## ◇ 型号说明 Model Designation

(F3-)	PC-	T6D	-45	R	-10
前注Note	泵芯标记 Cartridge mark	系列号 Series	排量代号 Flow code	旋转方向 Rotation	设计号 Design number
无标记No-marking: 石油系油Petroleum series oil 乳化液emulsification fluid 水-乙二醇water glycol- fluid F3: 磷酸酯液phosphate ester fluid	PC-单泵泵芯 双联泵轴端泵芯 Cartridge kit of dingle pump double pump shaft end PCT-双联泵盖端泵芯 Cartridge kit of double pump cover end	T6C	03、05、06、08、10、 12、14、17、20、22、 25、28、31	(从泵的轴端看) (Views form shaft end of pump) R-顺时针旋转right hand for clockwise L-逆时针旋转left hand for counterclockwise	10
		T6D	14、17、20、24、28、 31、35、38、42、45、 50		
		T6E	42、45、50、52、57、 62、66、72、85		

与相应系列、规格的单泵性能参数一致，详见T6系列单泵的性能参数

The data of relevant series, model are unanimous. Please see T6 series-single pumps data



系列号Series	ØA	B	C	ØD	E	ØF	ØG	H	K	M(橡胶平垫圈 Rubber washer)	N(橡胶平垫圈 Rubber washer)	ØP	L
T6C	95.25	99.4	93.9	61.9	73.6	4.8	89.3	4.8	43.7	88.5×3.53	60×3.53	77.7	5.5
T6D	123.03	132.4	125.8	71.9	103	8.7	108.3	6.4	41.2	107.5×3.53	69.5×3.53	无此台阶 no step	
T6E	143.12	150.3	142.5	88	112.7	10.8	136.8	7.9	49.2	136.1×3.53	85.3×3.53		
系列号 Series	转子内花键齿廓参数 Inside spline tooth outline parameter of rotor												
	齿数 Number of teeth	径节 Pitch	压力角 Pressure angle	大径 Major diameter	小径 Minor diameter								
T6C	28	40/80	45 °	18.87	17.4								
T6D	25	24/48	45 °	28.19	25.82								
T6E	34	24/48	45 °	37.72	35.35								

# T6系列叶片泵

## T6 Series-Vane Pumps

适用于塑胶机械、压铸机械、冶金机械、炼油机械、压力机械、工程机械及船舶机械等的高压高性能柱销式叶片泵。

### 主要特点为:

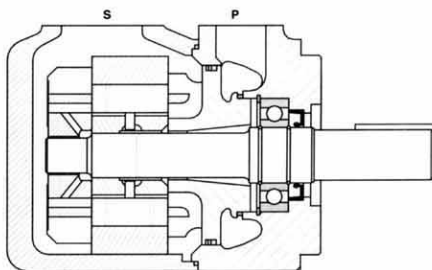
1. 采用柱销式叶片的结构, 其工作压力更高, 噪声更低, 寿命更长。
2. 适应液压介质的粘度范围大, 能在低温下启动和高温下运行。
3. 采用双层结构的叶片, 抗污染能力强, 转速范围宽。

High pressure and high performance dowel pin type vane pumps are widely used for plastic machinery, casting machinery, metallurgy machinery, pressing machinery, refining machinery, construction machinery, marine-Machinery.

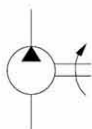
### Features

1. With dowel pin vane structure, it can work in high pressure, low noise and long lifetime.
2. This vane pump can fit wide viscosity hydraulic medium, and be started at low temperature and work at high temperature.
3. As the vane pump adopts bilabial structure vane, it has high oil pollution resistance and wide speed scope.

## □ T6系列单泵 T6 Series—single pumps



液压符号  
Hydraulic Sign



## ◇ 型号说明 Model Designation

(F3-)	T6C	-17	-1	R	00	-A
前注 Note	系列号 Series	排量代号 Flow code	轴伸形式 shaft type	旋转方向 Rotation	出口口位置 Outlet Positions	设计号 Design number
无标记No-marking: 石油系油 Petroleum series oil 乳化液 emulsification fluid 水-乙二醇water glycol-fluid F3: 磷酸酯液 phosphate ester fluid	T6C	03、05、06、08、10、 12、14、17、20、22、 25、28、31	见安装连接尺寸 See installation dimensions	(从泵的轴端看) (Views from shaft end of pump) R-顺时针旋转 right hand for clockwise L-逆时针旋转 left hand for counter-clockwise	(从泵的轴端看) (Viewed from shaft end of pump) 00-进油口对面 Opposite inlet port 01-进油口同侧 Inline with inlet 02-从进油口逆时针90° 90° CCW from inlet 03-从进油口顺时针90° 90° CW from inlet	A
	T6D	14、17、20、24、28、 31、35、38、42、45、 50				
	T6E	42、45、50、52、57、 62、66、72、85				

## ◇工作性能 Operation Performance

使用抗磨液压油, 油液粘度24cst时。

系列 (Series)	几何排量 (Geological Displacement) mL/rev	转速 (Rotation speed) r/min	流量 (Flow)L/min				输入功率 (Input Power) Kw			
			P=0 MPa	P=14 MPa	P=21 MPa	P=24.5 MPa	P=0.7 MPa	P=14 MPa	P=21 MPa	P=24.5 MPa
			L/min	L/min	L/min	L/min	Kw	Kw	Kw	Kw
T6D-14	47.6	1000	47.6	38.3	32.1	27.5	1.5	12.5	20.7	23.8
		1500	71.4	62.1	55.9	51.3	2.3	18.5	30.6	35.8
T6D-17	58.2	1000	58.2	48.9	45.2	42.7	1.7	15.0	22.0	25.0
		1500	87.3	78	74.3	71.8	2.5	22.2	32.6	37.0
T6D-20	66.0	1000	66.0	56.7	50.5	45.9	1.7	16.8	28.0	33.0
		1500	99.0	89.7	83.5	78.9	2.8	24.9	41.7	49.5
T6D-24	79.5	1000	79.5	70.2	64.0	54.9	1.9	19.9	33.4	39.7
		1500	119.3	110.0	103.8	99.2	3.0	29.6	49.8	59.6
T6D-28	89.7	1000	89.7	80.4	74.2	69.6	2.0	22.3	37.5	44.8
		1500	134.5	125.2	119.0	114.4	3.2	33.2	55.9	67.2
T6D-31	98.3	1000	98.3	89.0	82.8	78.2	2.1	24.3	40.9	49.1
		1500	147.4	138.1	131.9	127.3	3.3	36.2	61.0	73.7
T6D-35	111.0	1000	111.0	101.7	95.5	90.9	2.3	27.3	46.0	55.5
		1500	166.5	157.2	151.0	146.4	3.5	40.7	68.7	83.2
T6D-38	120.3	1000	120.3	111.0	104.8	100.2	2.4	29.4	49.8	60.1
		1500	180.4	171.1	164.9	160.3	3.7	43.9	74.3	90.2
T6D-42	136.0	1000	136.0	126.7	120.5	115.9	2.6	33.1	56.0	68
		1500	204.0	194.7	188.5	183.9	4.0	49.4	83.7	102
T6D-45	145.7	1000	145.7	136.4	130.2	125.6	2.7	35.3	59.9	72.8
		1500	218.5	209.3	203.0	198.4	4.1	52.8	89.5	109.2

T6E-42	132.3	1000	132.3	122.3	115.2	110.6	3.2	32.9	55.2	64.5
		1500	198.5	188.5	181.3	176.7	5.2	49.4	82.9	96.8
T6E-45	142.4	1000	142.4	132.4	125.3	120.7	3.4	35.3	59.2	69.4
		1500	312.6	203.6	196.5	191.9	5.4	52.9	88.7	152.5
T6E-50	158.5	1000	158.5	148.5	141.4	136.8	3.5	39.0	65.6	77.3
		1500	237.7	227.7	220.6	216	5.7	58.5	98.3	115.9
T6E-52	164.8	1000	164.8	154.8	147.7	143.1	3.6	40.5	68.2	80.4
		1500	247.2	237.2	203.1	198.5	5.8	60.8	102.1	120.6
T6E-57	179.8	1000	179.8	169.8	164.8	162.8	3.9	44.1	65.2	74.2
		1500	269.7	259.7	254.7	252.7	6.0	66.0	97.6	111.2
T6E-62	196.7	1000	196.7	186.7	179.6	175	4.0	47.9	80.9	95.9
		1500	295.0	285.0	277.9	273.3	6.4	71.9	121.3	143.9
T6E-66	213.3	1000	213.3	203.3	196.2	191.6	4.2	51.8	87.6	104.0
		1500	319.9	309.9	302.8	298.2	6.7	77.7	131.2	156.1
T6E-72	227.1	1000	227.1	217.1	210.0	205.4	4.3	55.0	93.1	110.8
		1500	340.6	330.6	323.5	318.9	6.9	82.6	139.5	166.3
T6E-85*	269	1000	269.0							
		1500	403.0							

\*050—最大间歇压力21MPa \*050: the max intermittent pressure is 21 MPa

\*085—最大间歇压力9MPa \*085: the max intermittent pressure is 9MPa.

## ◇工作性能 Operation Performance

使用抗磨液压油，油液粘度24cst时。

系列 (Series)	几何排量 (Geological Displacement) mL/rev	转速 (Rotation speed) r/min	流量 (Flow)L/min				输入功率 (Input Power) Kw			
			P=0 MPa	P=14 MPa	P=21 MPa	P=28 MPa	P=0.7 MPa	P=14 MPa	P=21 MPa	P=28 MPa
			L/min	L/min	L/min	L/min	Kw	Kw	Kw	Kw
T6C-03	10.8	1000	10.8	5.8	-	-	1.0	3.6	-	-
		1500	16.2	11.2	7.7	-	1.3	5.3	8.4	-
T6C-05	17.2	1000	17.2	12.2	8.7	-	1.1	5.1	8.4	-
		1500	25.8	20.8	17.3	12.8	1.4	7.5	12.2	13.8
T6C-06	21.3	1000	21.3	16.3	12.8	-	1.1	6.0	10.0	-
		1500	31.9	26.9	23.4	18.9	1.5	8.9	14.7	17.2
T6C-08	26.4	1000	26.4	21.4	17.9	13.4	1.2	7.2	12.1	14.2
		1500	39.6	34.6	42.2	37.7	1.6	10.7	17.1	21.4
T6C-10	34.1	1000	34.1	29.1	25.6	21.1	1.3	8.9	15.1	18.4
		1500	51.1	46.1	42.6	38.1	1.7	13.9	22.3	27.5
T6C-12	37.1	1000	37.1	32.1	28.6	24.1	1.3	9.6	16.3	20.0
		1500	55.6	50.6	47.1	42.6	1.7	14.4	24.1	30.0
T6C-14	45.8	1000	45.8	40.8	37.3	32.5	1.4	11.7	19.9	24.7
		1500	68.7	63.7	60.2	55.7	1.9	17.6	29.5	37
T6C-17	58.0	1000	58.0	53.0	49.5	45.0	1.6	14.5	24.8	31.3
		1500	87.0	82.0	78.5	74.0	2.1	21.9	36.9	46.9
T6C-20	63.8	1000	63.8	58.3	56.3	53.8	1.5	16.0	23.7	31.4
		1500	95.7	90.2	88.2	86.6	2.2	24.0	35.4	46.8
T6C-22	70.3	1000	70.3	65.3	61.8	57.3	1.7	17.3	29.6	37.9
		1500	105.4	100.4	96.9	92.4	2.3	26.1	44.1	56.9
T6C-25	79.3	1000	79.3	74.3	70.8	66.3	1.8	19.3	33.2	42.8
		1500	118.9	113.9	110.4	105.9	2.5	29.1	49.5	64.2
T6C-28*	88.8	1000	88.8	84.0	-	-	1.9	21.9	-	-
		1500	133.2	128.2	-	-	3.8	32.7	-	-
T6C-31*	100.0	1000	100.0	95.0	-	-	2.0	24.4	-	-
		1500	150.0	145.0	-	-	2.8	36.5	-	-

\*028,031—最大间歇值21MPa)

-因为内泄大于理论值的50%，故没有应用。

\*028,031: max intermittent value is 21 MPa

AS the inner leakage is over 50% of theoretical value. So it is not used.

## ◇ 技术参数 Technical Date

系列号 series	排量代号 Flow code (USgpm)	理论排量 Geometric displace- ment mL/r	最高压力 Max. pressure Mpa						最高转速 Max. speed r/min		最低 转速 Min. speed r/min
			抗磨液压油 Antiwear hydraulic oil		普通液压油和磷酸酯液 General hydraulic oil or phosphate eater fluid		水乙二醇和油包水乳化液 Water glycol fluid or water-oil emulsions		普通液压油和 抗磨液压油 General hydraulic oil or antiwear hydraulic oil	水乙二醇、磷酸酯 液和油包水乳化液 Water glycol fluid or phosphate eater fluid or water-oil emulsions	
			间歇	连续	间歇	连续	间歇	连续			
			Instant	Continuous	Instant	Continuous	Instant	Continuous			
T6C	03	10.8	28	24.5	21	17.5	17.5	14	2800	1800	600
	05	17.2									
	06	21.3									
	08	26.4									
	10	34.1									
	12	37.1									
	14	46.0									
	17	58.3									
	20	63.8									
	22	70.3									
	25	79.3									
	28	88.8	21	16		16		2500			
T6D	14	47.6	24.5	21	21	17.5	17.5	14	2500	1800	600
	17	58.2									
	20	66.0									
	24	79.5									
	28	89.7									
	31	98.3									
	35	111.0									
	38	120.3									
	42	136.0									
	45	145.7									
	50	158.0	21	16		16		2200			
T6E	42	132.3	24.5	21	21	17.5	17.5	14	2200	1800	600
	45	142.4									
	50	158.5									
	52	164.8									
	57	179.8									
	62	196.7									
	66	213.3									
	72	227.1									
		85	269.0	9	7.5	7.5	7.5	7.5	7.5	2000	