

# ALL STAINLESS STEEL FILLED PRESSURE GAUGES

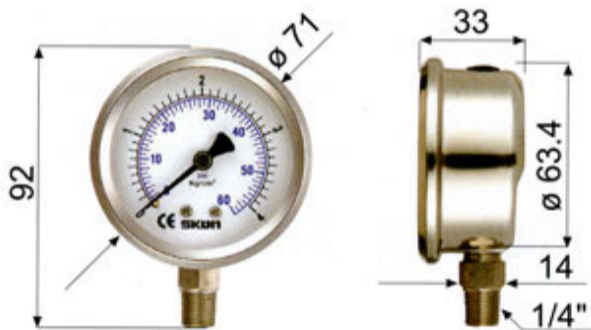


## APPLICATIONS

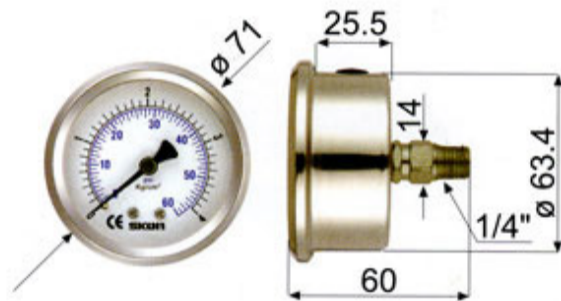
For corrosive atmospheres and fluids, resistant to high dynamic pressure loads and vibrations.  
Well suited for the process industry applications including: Petrochemical, Chemical plants, and energy etc.

## SPECIFICATIONS

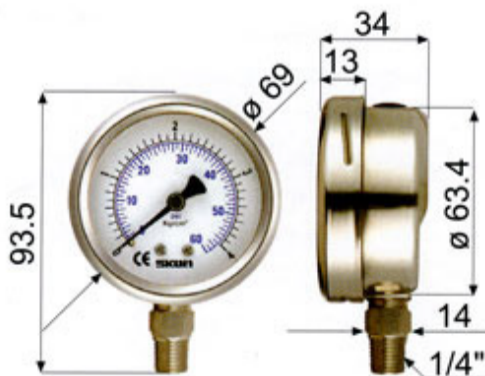
SPECIFICATIONS	CONTENTS
DIMENSIONS	63mm
ACCURACY	Class $\pm 1.5\%$
PRESSURE RANGES	-1/0 to -1/+20 kg/cm <sup>2</sup> (bar)
	0/1 to 0/1000 kg/cm <sup>2</sup> (bar)
TEMPERATURE	Working temperature 100°C max.
	Ambient temperature around: -25°C~60°C
CONNECTIONS	AISI 316, LM or LBM/CBM
	Size:14mm
SENSING ELEMENT	1/4". PT, NPT, PF, BSP
	Bourdon tube, AISI 316
MOVEMENT	DIN 50049 (AISI 316 Ti)
	< 70 kg/cm <sup>2</sup> (bar) Coil
DIAL	$\geq 70$ kg/cm <sup>2</sup> (bar) Helicoil
	AISI 316
POINTERS	White aluminium, black lettering
CASE	Black aluminium
UPPER RING	AISI 304
FILLING	AISI 304
WINDOW	Glycerine (99.5%)
	Normal glass.
ORDER OPTIONS	Laminated safety glass
	Acrylic
ORDER OPTIONS	Filling fluids optional
	Flange
	Red mark pointer
	U-shape clamp



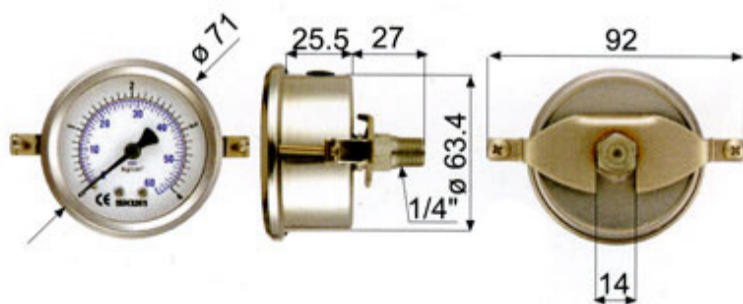
321.23



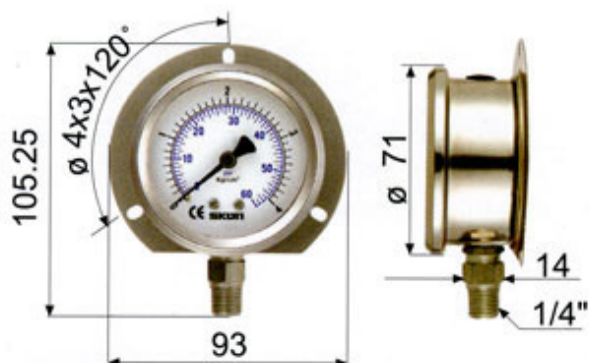
324.23



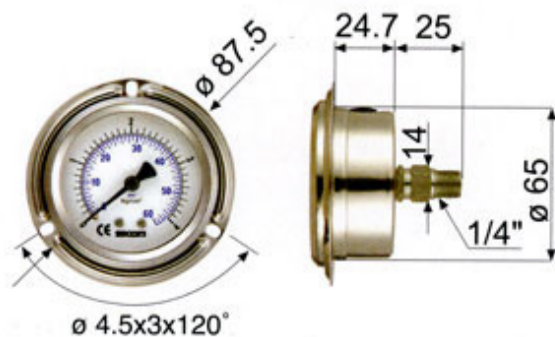
331.23



328.23



322.23



326.23

# ALL STAINLESS STEEL FILLED PRESSURE GAUGES



## APPLICATIONS

For corrosive atmospheres and fluids, resistant to high dynamic pressure loads and vibrations. Well suited for the process industry applications including: Petrochemical, Chemical plants, and energy etc.

## SPECIFICATIONS

DIMENSIONS

## CONTENTS

100mm

ACCURACY

Class  $\pm 1.0\%$

PRESSURE RANGES

-1/0 to -1/+20 kg/cm<sup>2</sup> (bar)  
0/1 to 0/1500 kg/cm<sup>2</sup> (bar)

TEMPERATURE

Working temperature 100°C max.  
Ambient temperature around: -20°C~60°C  
AISI 316, LM or LBM/CBM

CONNECTIONS

Size : 22mm  
3/8", PT, NPT, PF, BSP  
1/2", PT, NPT, PF, BSP

SENSING ELEMENT

Bourdon Tube, AISI 316  
DIN 50049 (AISI 316 Ti)  
<70 kg/cm<sup>2</sup> (bar) Coil  
 $\geq 70$  kg/cm<sup>2</sup> (bar) Helicoil

MOVEMENT

AISI 316

DIAL

White aluminium, black lettering

POINTER

Black aluminium

CASE

AISI 304

UPPER RING

AISI 304

FILLING

Glycerine (99.5%)

Normal glass.

WINDOW

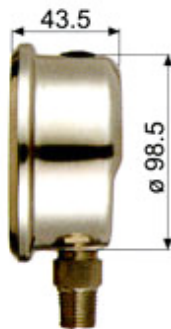
Laminated safety glass  
Acrylic

ORDER OPTIONS

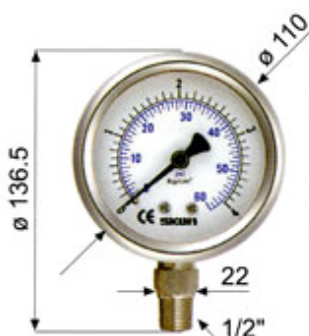
Filling fluids optional  
Flange  
Red mark pointer  
U-shape clamp



421.23



424.23



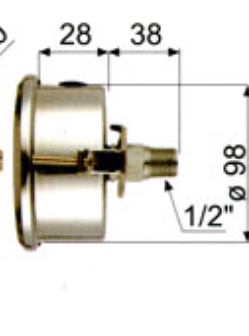
431.23



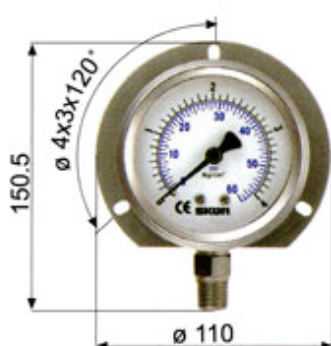
428.23



422.23



426.23



Pressure Switch Series

型號 / MODEL

**JC-PS-02**  
**JC-PS-02L**  
**JC-PS-02LL**

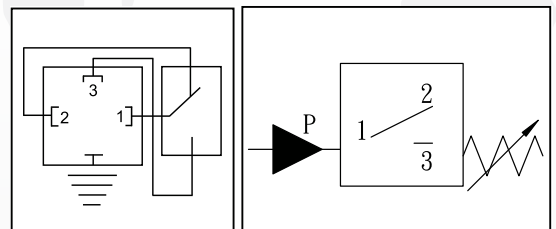


性能表 / SPECIFICATION

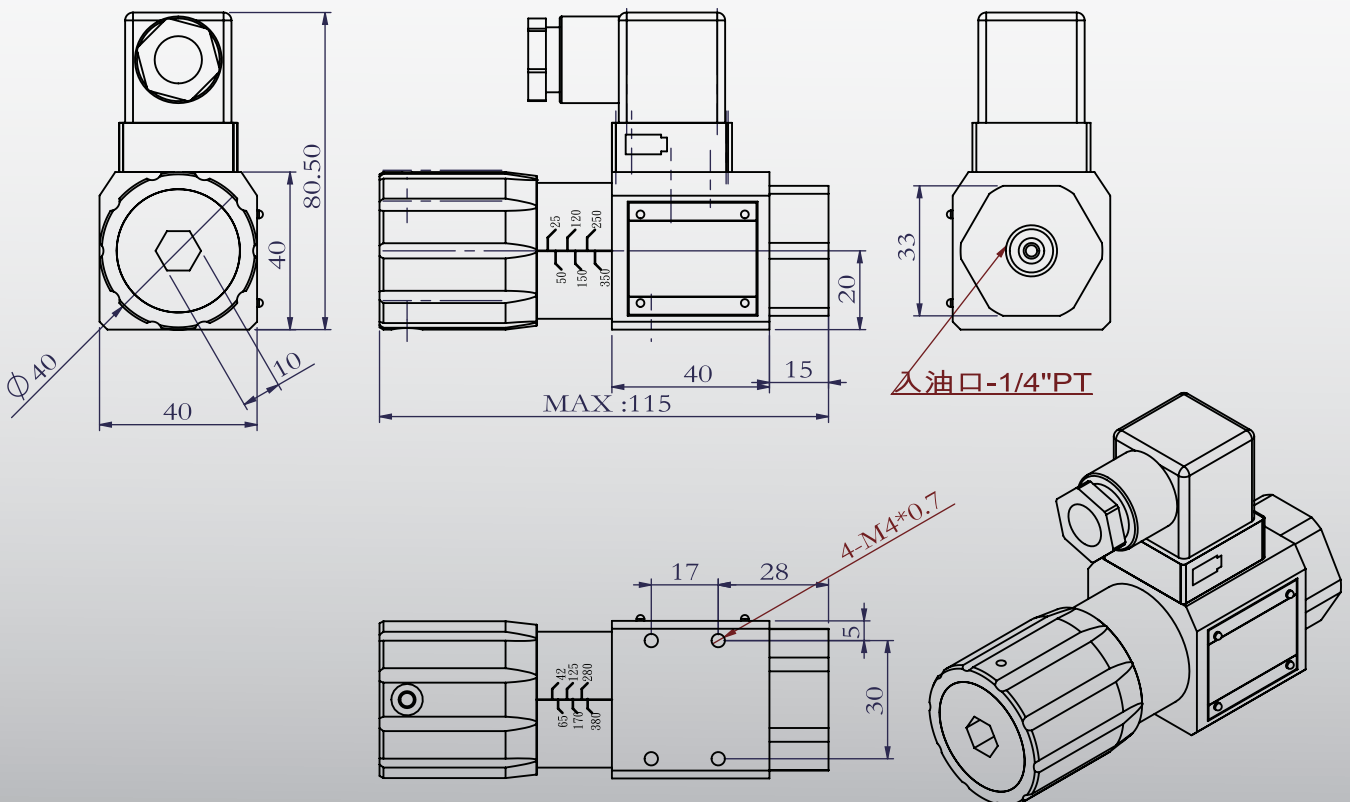
形式 MODEL	使用壓力 USED RESSURE	最大壓力 MAX. PRESSURE
JC-PS-02	50-450kg/cm <sup>2</sup>	500 kg/cm <sup>2</sup>
JC-PS-02L	15-210kg/cm <sup>2</sup>	350 kg/cm <sup>2</sup>
JC-PS-02LL	10- 60kg/cm <sup>2</sup>	250 kg/cm <sup>2</sup>

最大 電壓 / 電流 MAX. Voltage / Current	最小 電壓 / 電流 MIN. Voltage / Current
250V / 3A 125V / 5A	DC 24V / 20mA

符號 / SYMBOLS



外型尺寸圖 / DIMENSIONS (UNIT : mm)



型號 / MODEL

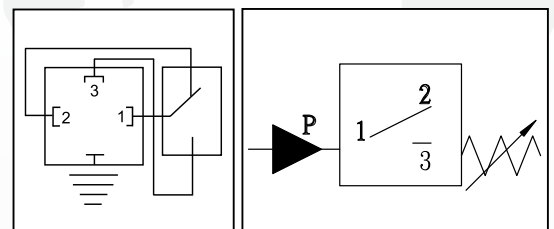
**JCS-02N-02NL-02NLL**  
**JCH-02**



性能表 / SPECIFICATION

形式 MODEL	使用壓力 USED RESSURE	最大壓力 MAX. PRESSURE
JCS-02N	20-210kg/cm <sup>2</sup>	230kg/cm <sup>2</sup>
JCS-02NL	15-60kg/cm <sup>2</sup>	230kg/cm <sup>2</sup>
JCS-02NLL	5-40kg/cm <sup>2</sup>	60kg/cm <sup>2</sup>
JCH-02 <i>Upgrade</i>	20-500kg/cm <sup>2</sup>	600kg/cm <sup>2</sup>
最大 電壓 / 電流 MAX. Voltage / Current	250V / 3A 125V / 5A	最小 電壓 / 電流 MIN. Voltage / Current DC 24V / 160mA

符號 / SYMBOLS



外型尺寸圖 / DIMENSIONS (UNIT : mm)

