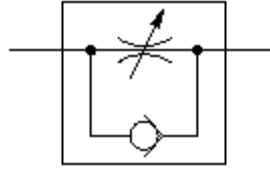


Flow Control Valves

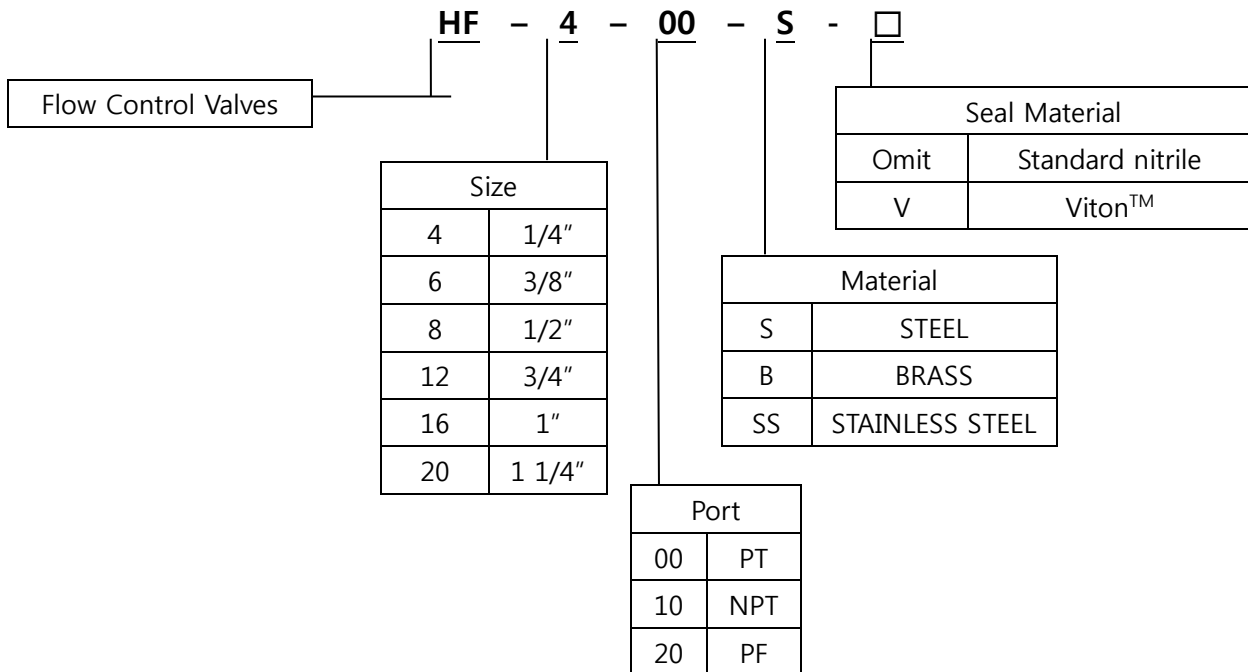


SYMBOL



● 2단계 니들로, 처음 세번의 손잡이 회전에 미세조정을 하며, 다음 세번의 손잡이 회전은 표준조절을 해줍니다.

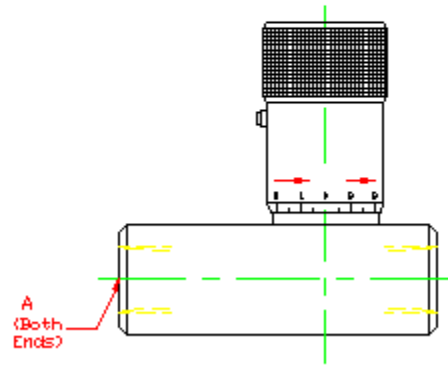
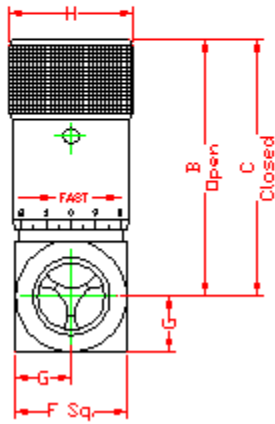
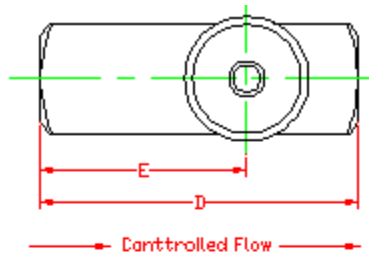
HOW TO ORDER :



SPECIFICATION :

- **최고 사용압력 MAX.OPERATIONG PRESSURE**
 - HF 400 ~ 800 : 350 Bar
 - HF 1200 ~ 2000 : 210 Bar
- **Check v/v Cracking PRESSURE** : 0.4 Bar
- **사용가능 온도 TEMPERATURE ADJ.RANGE**
-40 °C ~ 121°C

INSTALLATION DIMENSIIONS



MODEL	MAX. FLOW (L/m)	DIMENSION (mm)							
		A (PT)	B	C	D	E	F	G	H
HF 400S	19	1/4"	45.5	40.4	66.8	42.2	20.6	10.4	20.6
HF 600S	30	3/8"	55.4	49.5	69.9	44.5	25.4	12.7	25.4
HF 800S	57	1/2"	68.6	61.5	87.4	56.6	31.8	16	30.2
HF 1200S	95	3/4"	85.9	71.4	98.6	65.5	38.1	19.1	35.1
HF 1600S	151	1"	123.7	106.9	127	81.8	44.5	22.4	47.8
HF 2000S									

PERFORMANCE CURVE

